

# H.265 X.Encoder

## Prducts instruction

1. environment configuration .....	1
1.1. hardware environment .....	1
1.2. software environment .....	2
2. encoding settings.....	4
2.1. encoding settings.....	4
3. system settings .....	6
3.1. network settings.....	6
3.2. password settings .....	7
3.3. system update .....	7
3.4. to factory settings.....	8

### 1. environment configuration

#### 1.1. hardware environment

Interface and key name according to the picture from left to right:

- ① 12V power supply ;
- ② SDI input ;
- ③ reset : Long press 10 seconds and back to factory Settings ;
- ④ network port : the address is 192.168.1.168 by default

Connect the interface as shown in the figure below. Plugged into a power supply,HDMI port, network port.



## 1.2. software environment

### 1.2.1. login the setting background

Open browser and input address 192.168.1.168. Open the web site, then enter account and password in the pop-up dialog box (both default account and password are admin). As shown in figure 1, enter the web site home page is shown in figure 2.

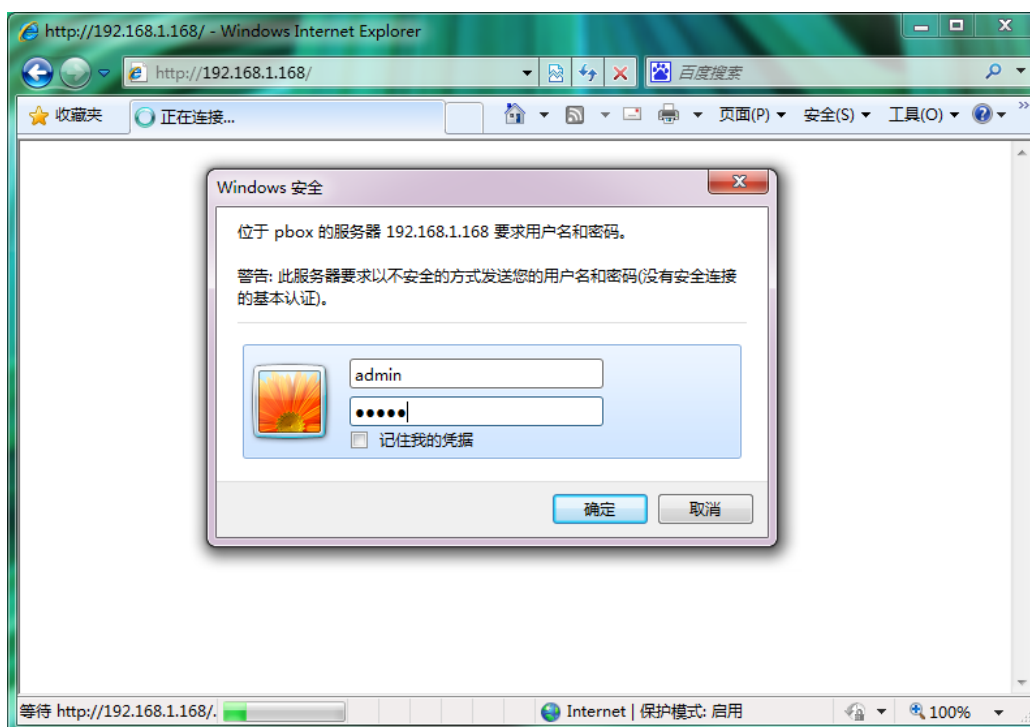


figure1

### 1.2.2. check the video signal

As shown in Figure 2, has collected 0 video frames or refresh the page this did not increase, indicating that there is no access to video signal. Check whether the HDMI source of the equipment is connected, if not 0 and refresh the page and Video frames in the increase is said to have a video signal.

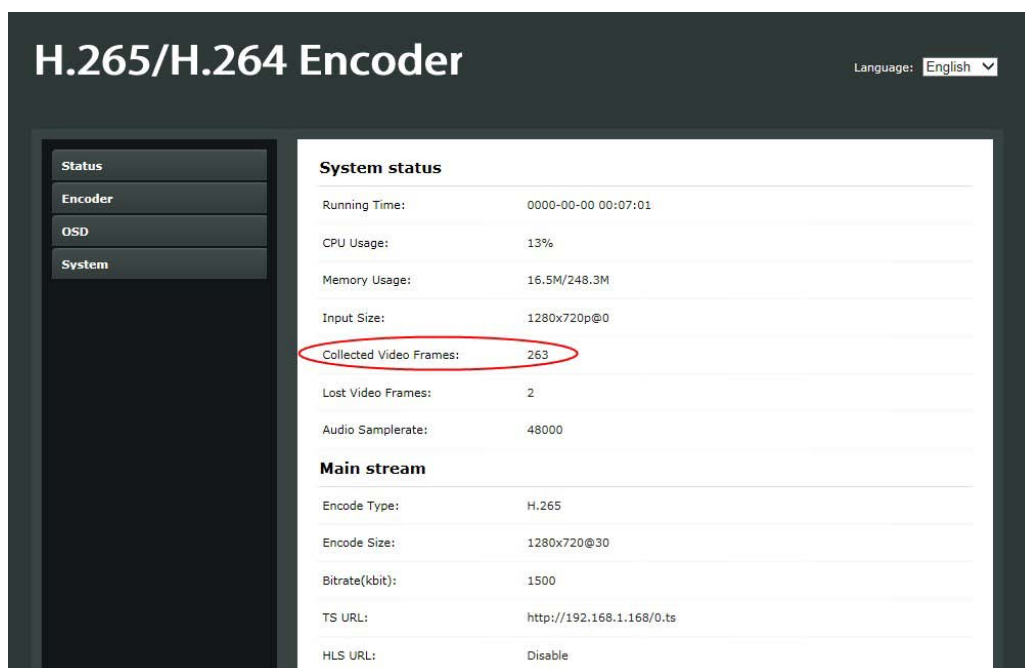


figure2

### 1.2.3. check the stream address

As shown in Figure 3, the contents of the red box for video stream address.

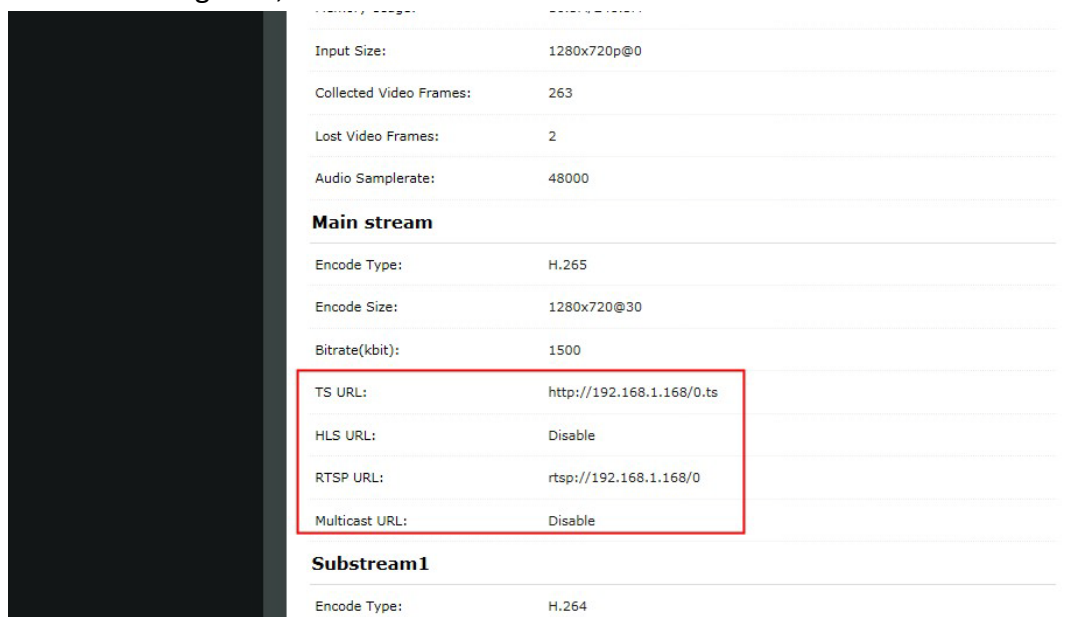


figure3

### 1.2.4. play video

In the case of having a video signal to open the VLC player(VLC player download address :<http://www.videolan.org/>),According to figure 5, figure 4 set the code stream address, click play, you can play the device code out of the video stream.

figure4



figure5

## 2. encoding settings

### 2.1. encoding settings

Click on the encoding settings → Main stream → Set the parameters  
→ Click Settings. As shown in figure 6

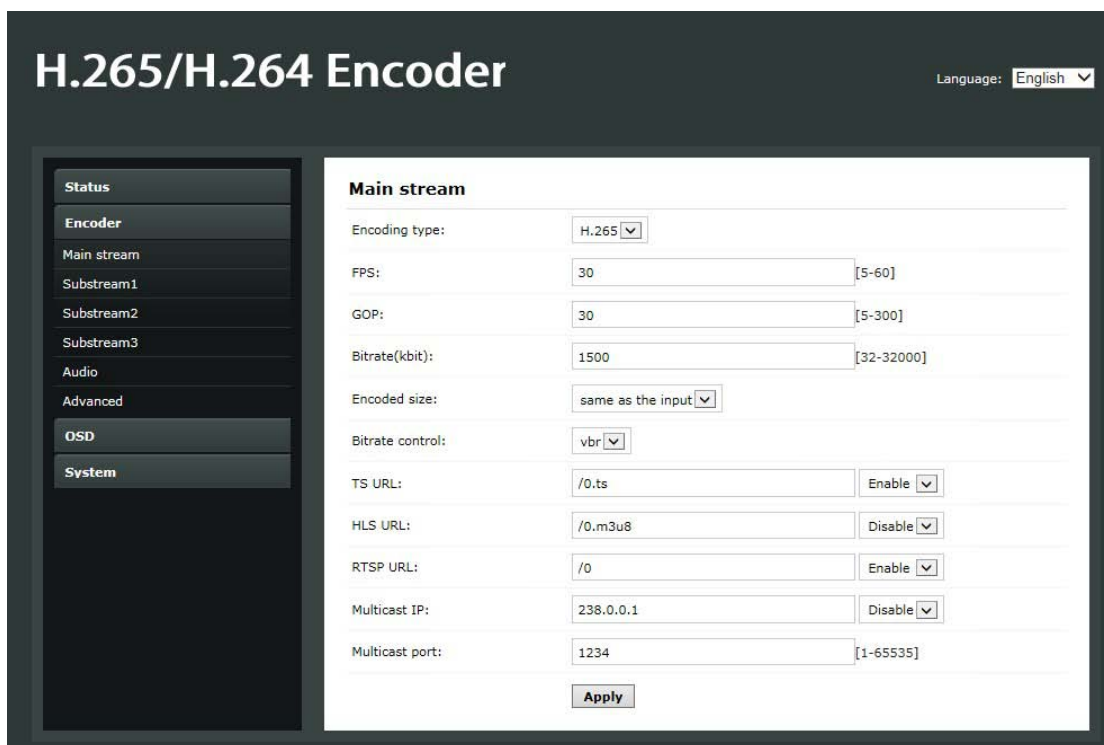


figure6

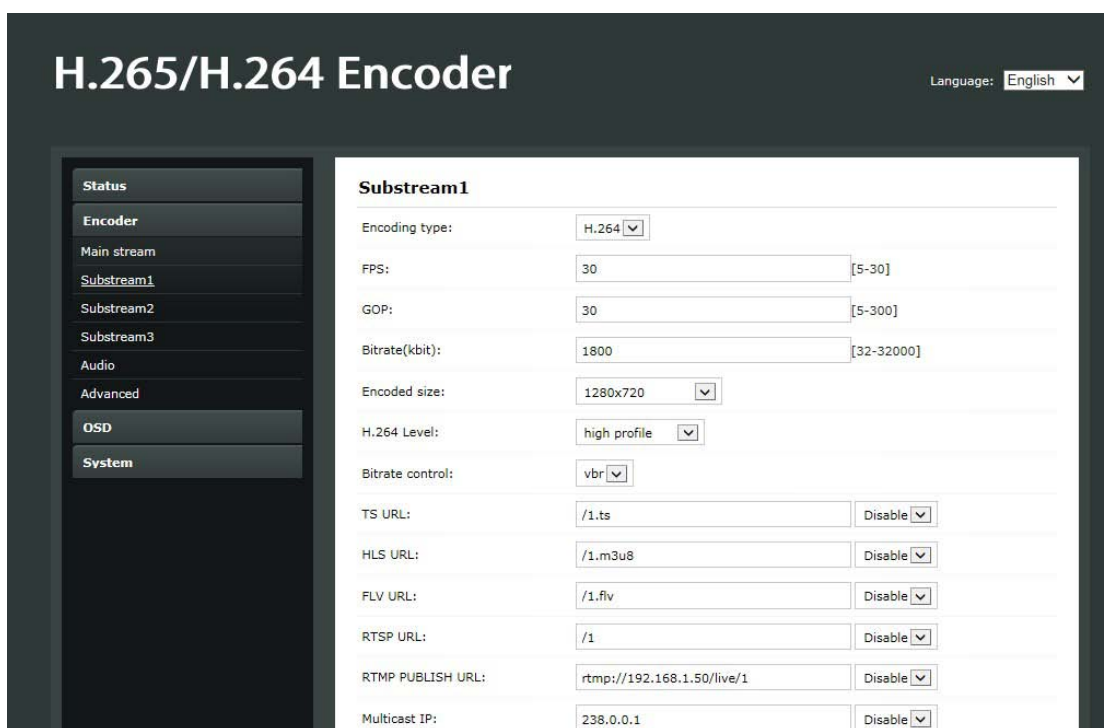
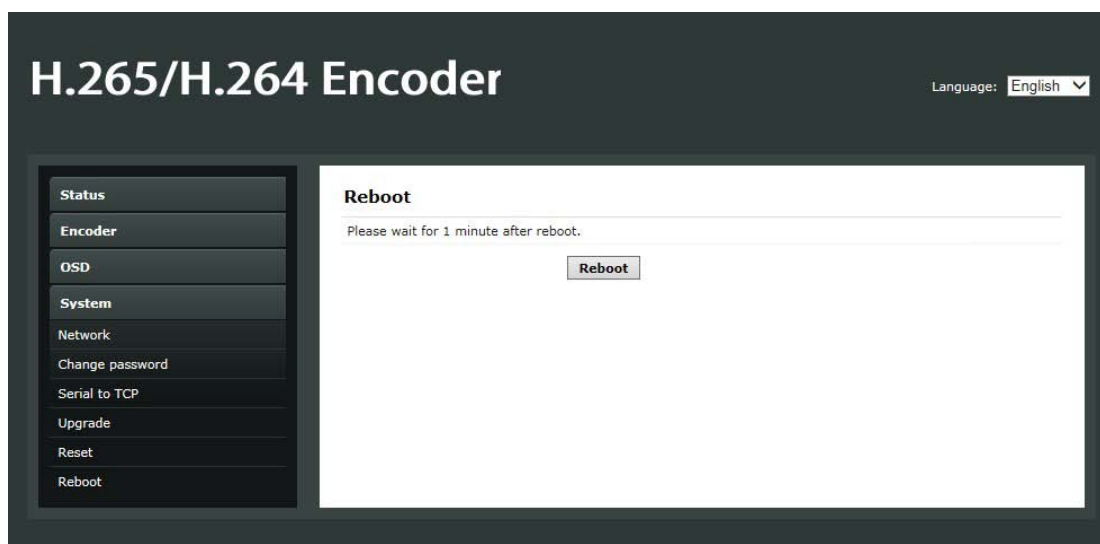


figure7

Set to restart the system after successful ,Click system settings→click reboot(After the restart, please refresh the page after wait for 30 seconds ).



### 3. system settings

#### 3.1. network settings

Click system settings → Network settings → Set the parameters  
→ Click Settings, As shown in figure 9

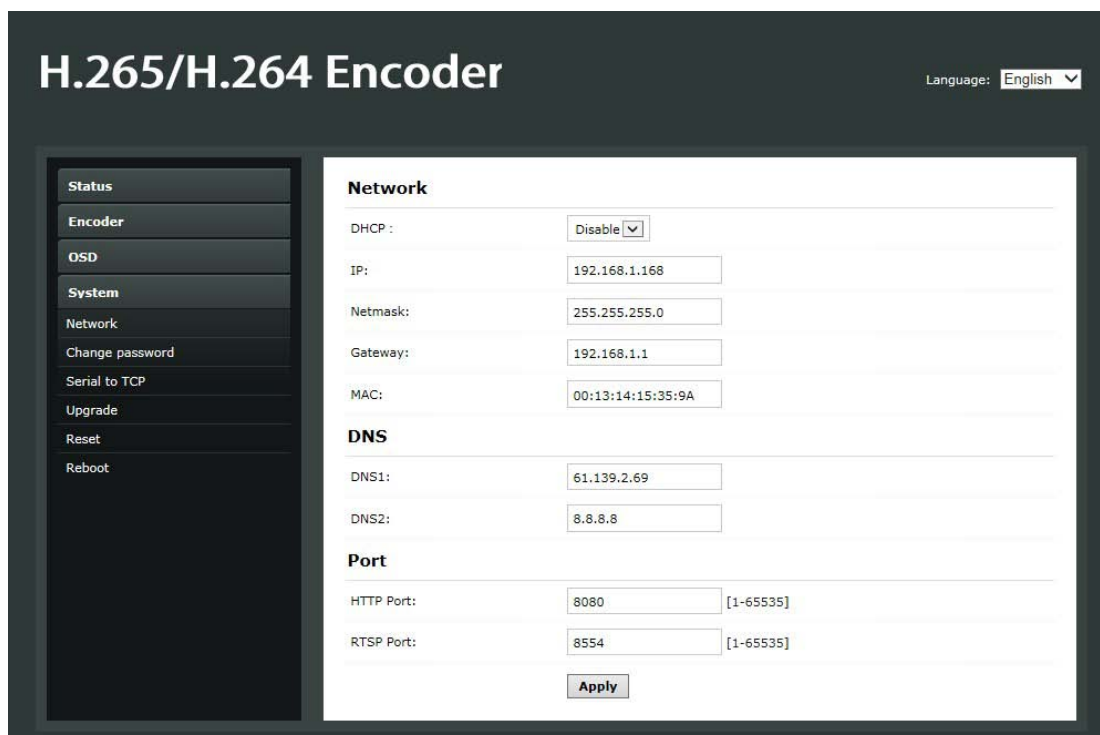


figure9

Click on the restart (After the restart, please refresh the page after wait for 30 seconds).

### 3.2. password settings

Click system settings → Password settings → Click Settings , As shown in figure11

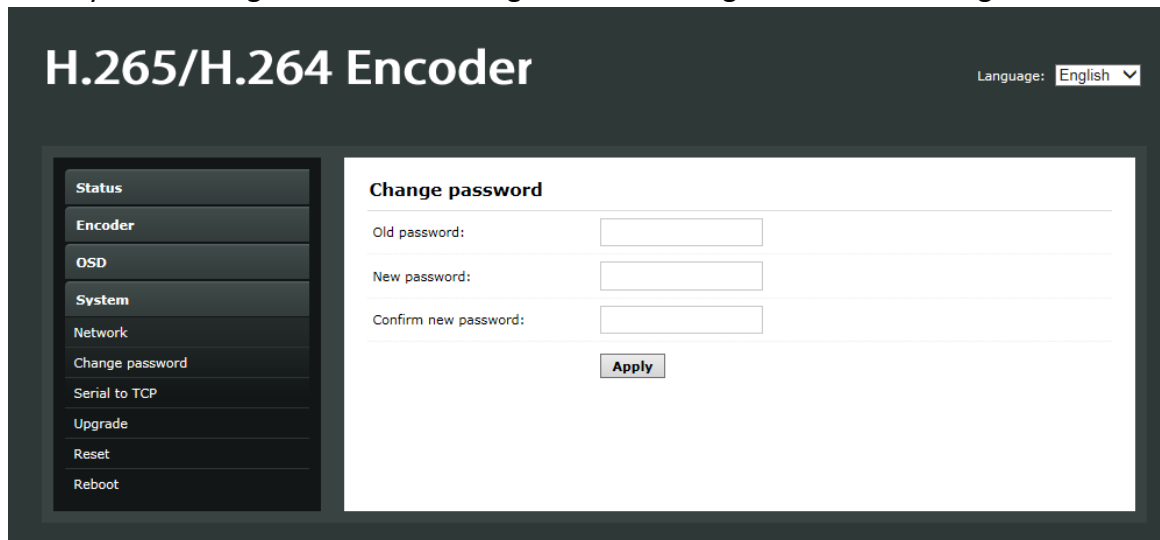


figure11

Click on the restart(After the restart, please refresh the page after wait for 30 seconds ).

### 3.3. system update

Click system settings → click System update → click browse → Choose to update the system files → Click upload, As shown in figure 13.

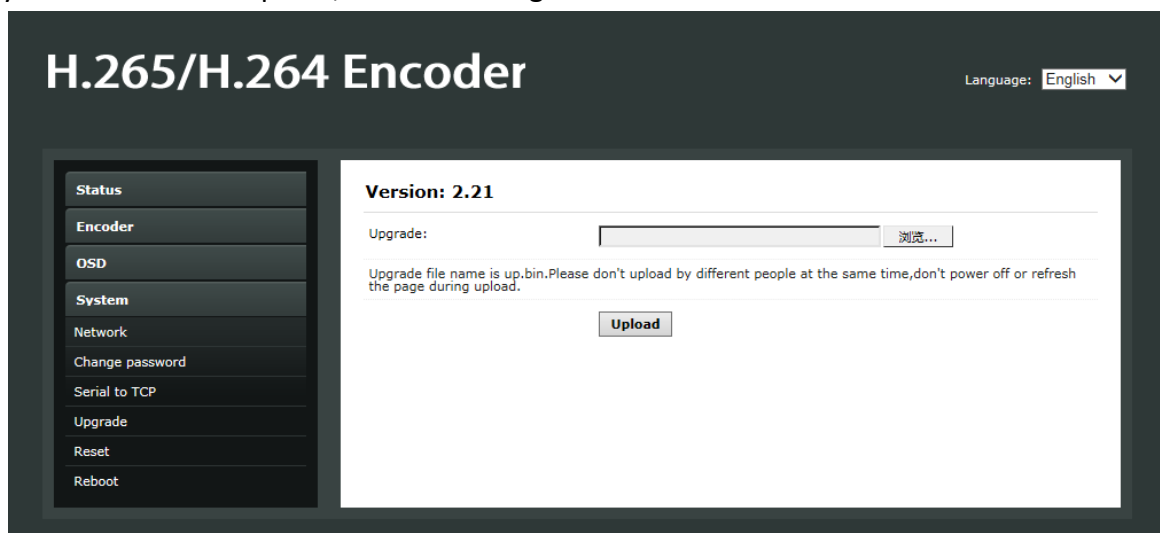


figure13

Click on the restart(After the restart, please refresh the page after wait for 30 seconds ).

### 3.4. to factory settings

Click system settings→click Restore factory settings→click Reset .As shown in figure 15.

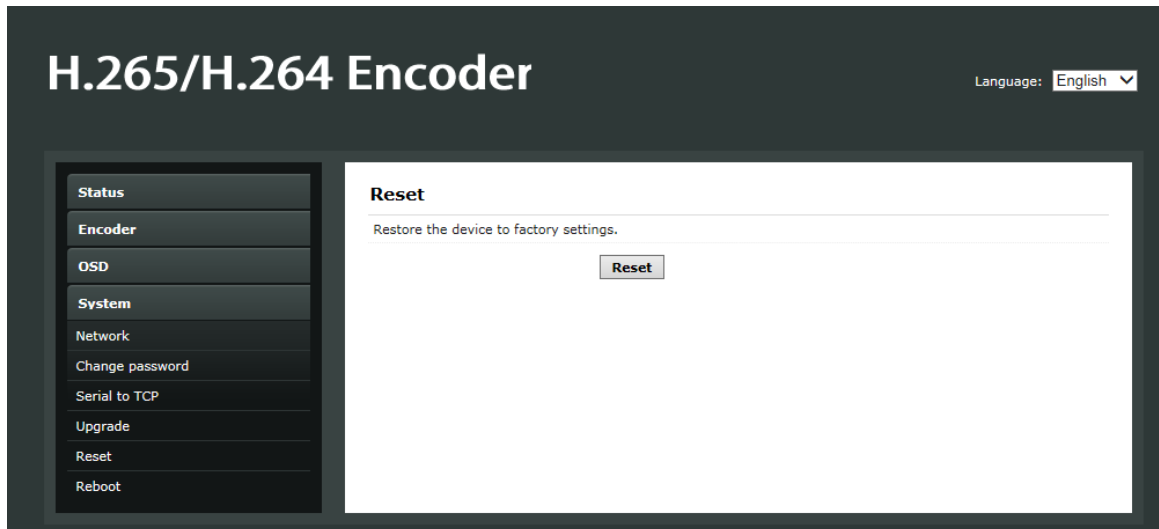


figure15

Click on the restart(After the restart, please refresh the page after wait for 30 seconds ).